

NOW EXCLUDING DPF!  
New price, Smarter offering, Same Quality

# The world's first fully serviceable Euro VI silencer

Damaged catalysts and AdBlue® deposits are some of the most common reasons Euro VI silencers are scrapped. A new concept by Dinex greatly improves repairability and remanufacturability, saving time, costs – and the planet's resources.



AFTERMARKET



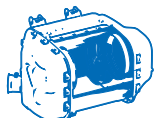
All You Need From Turbo To Tailpipe

## Dinex Euro VI Silencer for Iveco Eurocargo



### No Cutting or Welding needed

Silencer interior is accessible by unbolting, and both DOC and SCR substrates are mounted with leakage-safe gaskets and clamps. Fast, safe and convenient.



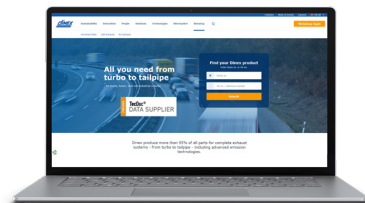
### Easy access to the interior

With all substrates out, you have better ability to remove AdBlue® deposits that may have formed in corners and bends, blocking the optimal flow of exhaust gas.



### Approved and Warrantied

All Euro VI emission technologies from Dinex is fully Type Approved for on-road and naturally covered by our unique 3-year warranty.

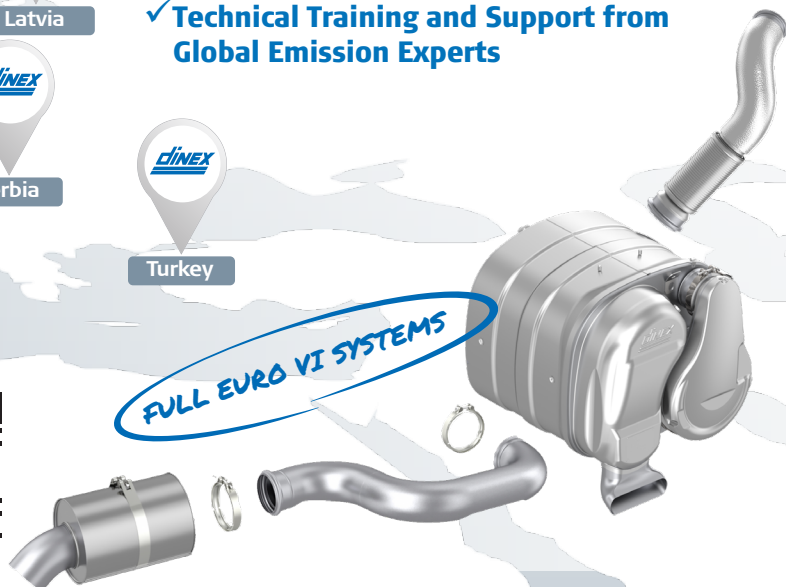


For more information and updates, stay tuned at our webshop here:



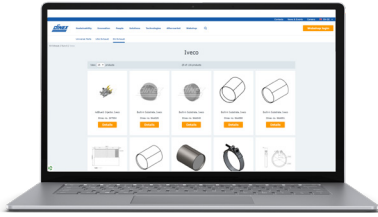
## Your Partner in Exhaust and Emission

- ✓ Global Supplier to the OEM Industry
- ✓ Wide Distributor Network of Availability, Reliability & Flexibility
- ✓ Technical Training and Support from Global Emission Experts



# Iveco Eurocargo

Visit [www.dinex.net](http://www.dinex.net) for more parts.



**Dinex no.:** 2KC043  
**OE no.:** 5801391046,  
5801391037, 5801391038

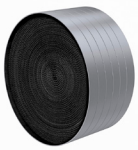
**Includes DOC and SCR.**  
**The silencer is only compatible  
with DPFs that have OE numbers  
5801651208, 5801651207.**

**NOW EXCLUDING DPF!**  
New price, Smarter offering, Same Quality



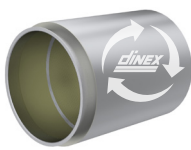
## ACCESSORIES

### DOC



**Dinex no.:**  
9AA048

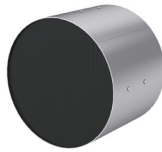
### DPF



**Dinex no.:**  
2KI015 New  
2KI015-RX Recon.  
**OE no.:**  
5801651208

2KI014 New  
2KI014-RX Recon.  
**OE no.:**  
5801651207

### SCR



**Dinex no.:**  
9AA091

### DPF acc KIT



**Dinex no.:**  
2KL017  
**OE no.:**  
5801651206

### Exhaust Pipes



**Dinex no.:**  
2KA020  
**OE no.:**  
5801447611

**Dinex no.:**  
2KA021  
**OE no.:**  
5801385138

### Pump for AdBlue®



**Dinex no.:** 2KP000  
**OE no.:** 504381868,  
5802513619, 5802855457

### Injector for AdBlue®



**Dinex no.:** 2AT002  
**OE no.:** 504381880

### NO<sub>x</sub> Sensors



**Dinex no.:** 29032  
**OE no.:** 5801754014,  
5801627703

### Temperature Sensors



**Dinex no.:** 29042  
**OE no.:** 5801455941  
**Dinex no.:** 29045  
**OE no.:** 5801908973  
**Dinex no.:** 29046  
**OE no.:** 5801922815  
**Dinex no.:** 29047  
**OE no.:** 5801732665

### Pressure Sensor



**Dinex no.:** 29050  
**OE no.:** 5801792376

Manufacturers part numbers and brand names, including model and engine designations are quoted for reference only.

Contact your local Dinex office or visit [www.dinex.net](http://www.dinex.net) for more information.