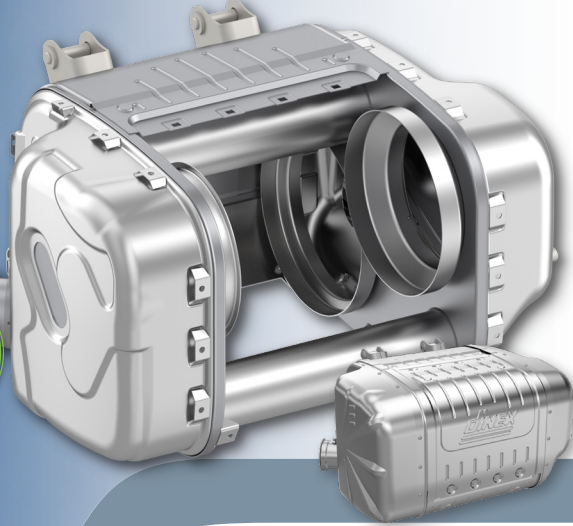


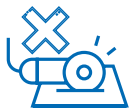
The world's first fully serviceable Euro VI silencer

Damaged catalysts and AdBlue® deposits are some of the most common reasons Euro VI silencers are scrapped. A new concept by Dinex greatly improves reparability and remanufacturability, saving time, costs – and the planet's resources.



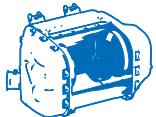
All You Need From Turbo To Tailpipe

Dinex Euro VI Silencer for Iveco Eurocargo



No Cutting or Welding needed

Silencer interior is accessible by unbolting, and both DOC and SCR substrates are mounted with leakage-safe gaskets and clamps. Fast, safe and convenient.



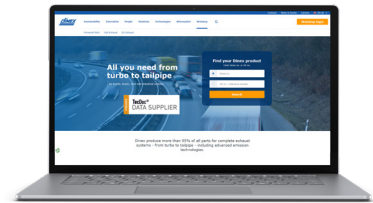
Easy access to the interior

With all substrates out, you have better ability to remove AdBlue® deposits that may have formed in corners and bends, blocking the optimal flow of exhaust gas.



Approved and Warrantied

All Euro VI emission technologies from Dinex is fully Type Approved for on-road and naturally covered by our unique 3-year warranty.



For more information and updates, stay tuned at our webshop here:



Your Partner in Exhaust and Emission

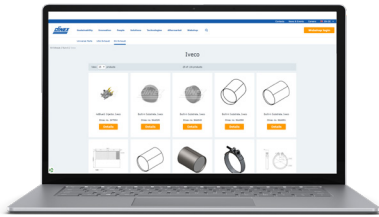


- ✓ Global Supplier to the OEM Industry
- ✓ Wide Distributor Network of Availability, Reliability & Flexibility
- ✓ Technical Training and Support from Global Emission Experts

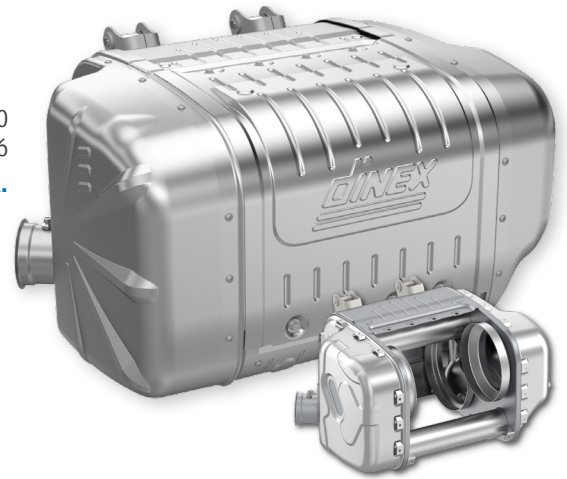


Iveco Eurocargo

Visit www.dinex.net for more parts.

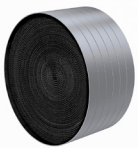


Dinex no.: 2KC010
OE no.: 5801391046
Includes DOC, DPF and SCR.



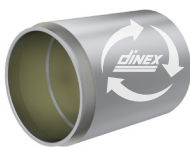
ACCESSORIES

DOC



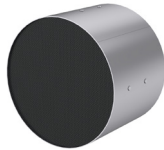
Dinex no.: 9AA048

DPF



Dinex no.: 2KI015 / New
 2KI015-RX / Reconditioned
OE no.: 5801651208

SCR



Dinex no.: 9AA091

DPF acc KIT



Dinex no.: 2KL017
OE no.: 5801651206

Exhaust Pipes



Dinex no.: 2KA020
OE no.: 5801447611

Dinex no.: 2KA021
OE no.: 5801385138

Pump for AdBlue®



Dinex no.: 2KP000
OE no.: 504381868,
 5802513619, 5802855457

Injector for AdBlue®



Dinex no.: 2AT002
OE no.: 504381880

NO_x Sensors



Dinex no.: 29032
OE no.: 5801754014,
 5801627703

Temperature Sensors



Dinex no.: 29042
OE no.: 5801455941
Dinex no.: 29045
OE no.: 5801908973
Dinex no.: 29046
OE no.: 5801922815
Dinex no.: 29047
OE no.: 5801732665

Pressure Sensor

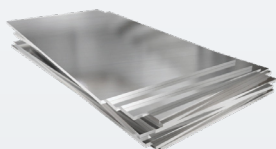


Dinex no.: 29050
OE no.: 5801792376

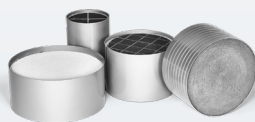
Value Chain Emissions Matter

By replacing all substrates rather than the entire silencer, you save **~680 kg of CO₂e** in the value chain.

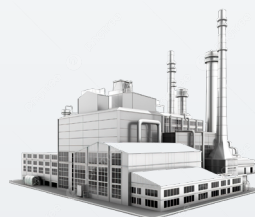
Dinex uses local suppliers and production, to minimize transport emissions.



Production of Stainless Steel
~570 kg CO₂e



Ceramic substrates
~400 kg CO₂e
 (incl. catalytic coating & precious metals)



Assembly
~100 kg CO₂e



Transport & Distribution
~10 kg CO₂e

**Final Footprint
 ~1.080 kg CO₂e**

Production of a new silencer emits just as much CO₂ as hauling 20 tons of goods 415 km.

Contact your local Dinex office or visit www.dinex.net for more information.