

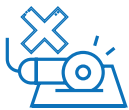
# The world's first fully serviceable Euro VI silencer

Damaged catalysts and AdBlue® deposits are some of the most common reasons Euro VI silencers are scrapped. A new concept by Dinex greatly improves reparability and remanufacturability, saving time, costs – and the planet's resources.



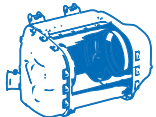
All You Need From Turbo To Tailpipe

## Dinex Euro VI Silencer for Iveco Eurocargo



### No Cutting or Welding needed

Silencer interior is accessible by unbolting, and both DOC and SCR substrates are mounted with leakage-safe gaskets and clamps. Fast, safe and convenient.



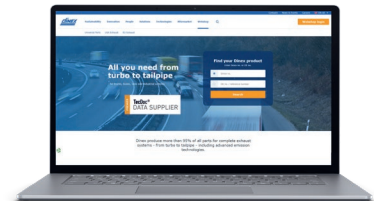
### Easy access to the interior

With all substrates out, you have better ability to remove AdBlue® deposits that may have formed in corners and bends, blocking the optimal flow of exhaust gas.



### Approved and Warrantied

All Euro VI emission technologies from Dinex is fully Type Approved for on-road and naturally covered by our unique 3-year warranty.



For more information and updates, stay tuned at our webshop here:



## Your Partner in Exhaust and Emission

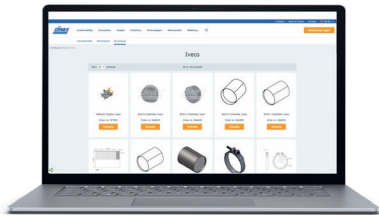


- ✓ Global Supplier to the OEM Industry
- ✓ Wide Distributor Network of Availability, Reliability & Flexibility
- ✓ Technical Training and Support from Global Emission Experts

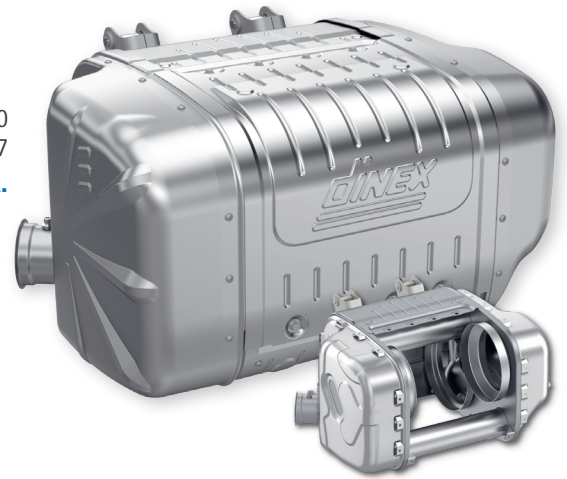


# Iveco Eurocargo

Visit [www.dinex.net](http://www.dinex.net) for more parts.

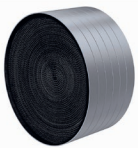


**Dinex no.:** 2KC010  
**OE no.:** 5801475667  
**Includes DOC, DPF and SCR.**



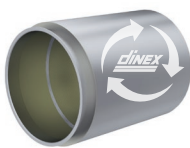
## ACCESSORIES

### DOC



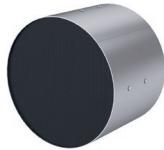
**Dinex no.:** 9AA048

### DPF



**Dinex no.:** 2KI015 / New  
 2KI015-RX / Reconditioned  
**OE no.:** 5801651208

### SCR



**Dinex no.:** 9AA091

### DPF acc KIT



**Dinex no.:** 2KL017  
**OE no.:** 5801651206

### Exhaust Pipes



**Dinex no.:** 2KA020  
**OE no.:** 5801447611

**Dinex no.:** 2KA021  
**OE no.:** 5801385138

### Pump for AdBlue®



**Dinex no.:** 2KP000  
**OE no.:** 504381868,  
 5802513619, 5802855457

### Injector for AdBlue®



**Dinex no.:** 2AT002  
**OE no.:** 504381880

### NO<sub>x</sub> Sensors



**Dinex no.:** 29032  
**OE no.:** 5801754014,  
 5801627703

### Temperature Sensors



**Dinex no.:** 29042  
**OE no.:** 5801455941  
**Dinex no.:** 29045  
**OE no.:** 5801908973  
**Dinex no.:** 29046  
**OE no.:** 5801922815  
**Dinex no.:** 29047  
**OE no.:** 5801732665

### Pressure Sensor

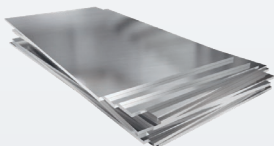


**Dinex no.:** 29050  
**OE no.:** 5801792376

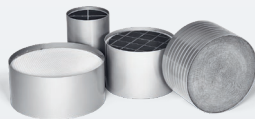
## Value Chain Emissions Matter

By replacing all substrates rather than the entire silencer, you save **~680 kg of CO<sub>2</sub>e** in the value chain.

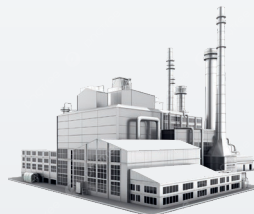
*Dinex uses local suppliers and production, to minimize transport emissions.*



Production of Stainless Steel  
**~570 kg CO<sub>2</sub>e**



Ceramic substrates  
**~400 kg CO<sub>2</sub>e**  
 (incl. catalytic coating & precious metals)



Assembly  
**~100 kg CO<sub>2</sub>e**



Transport & Distribution  
**~10 kg CO<sub>2</sub>e**

**Final Footprint  
 ~1.080 kg CO<sub>2</sub>e**

**Production of a new silencer emits just as much CO<sub>2</sub> as hauling 20 tons of goods 415 km.**

Contact your local Dinex office or visit [www.dinex.net](http://www.dinex.net) for more information.