



going the extra mile

Technical Service Bulletin

To: **All Dinex Customers**

From: **Product Management and Technical Support, Dinex Emission Inc.**

Subject: **SCR Inlet Temperature Sensor Location Change on EPA10/EPA14 Dinex OneBoxes**

Due to patents on the OEM OneBox, Dinex's OneBox was designed with a flow that is different than the OEM (**Figure 1**). The Dinex OneBox's flow runs from the final SCR/ASC into a transfer pipe that leads to the outlet pipe. This caused the inlet temperature sensor to not be as accurate as possible in the same location as the OE OneBox.

PARTICLE FLOW

- 1 Diesel Oxidation Catalyst (DOC)
- 2 Diesel Particulate Filter (DPF)
- 3 DEF hydrolysis chamber
- 4 Selective Catalytic Reduction (SCR) Catalyst

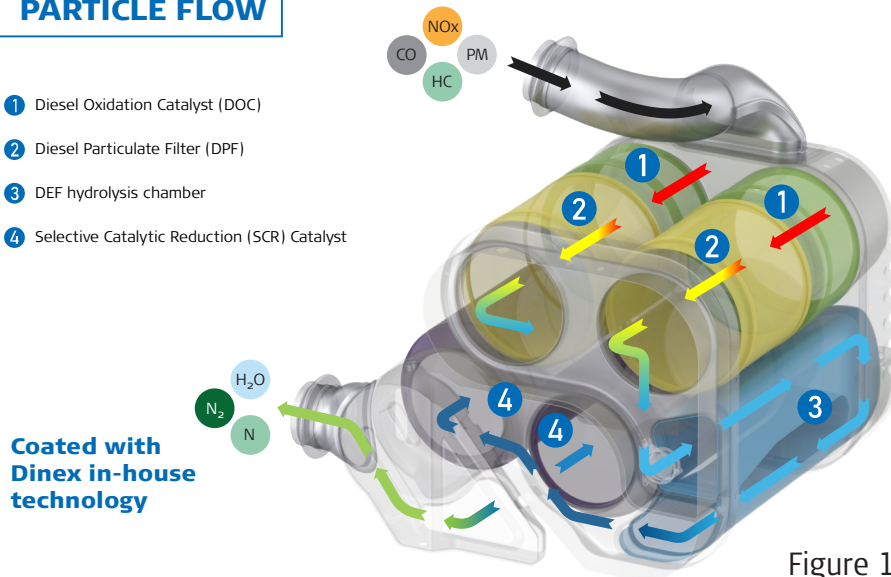


Figure 1

After extensive testing in Dinex's R&D center, the decision was made to make a change to the design moving the inlet temperature from the left-hand side of the SCR/ASC to the right-hand side (**Figure 2**). This change was made in order to allow the sensor to give a more accurate inlet temperature reading. Old stock and new stock will both function in the required parameters. The change just offers a more accurate temperature measurement.

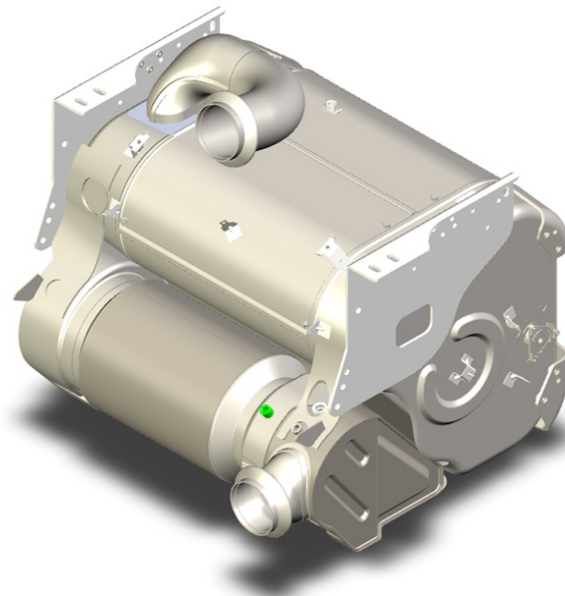


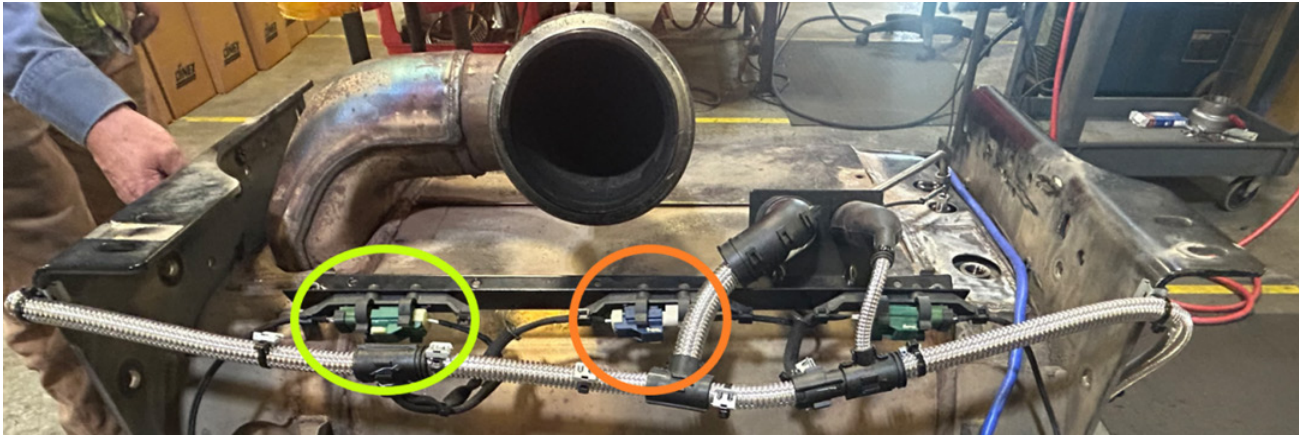
Figure 2



going the extra mile

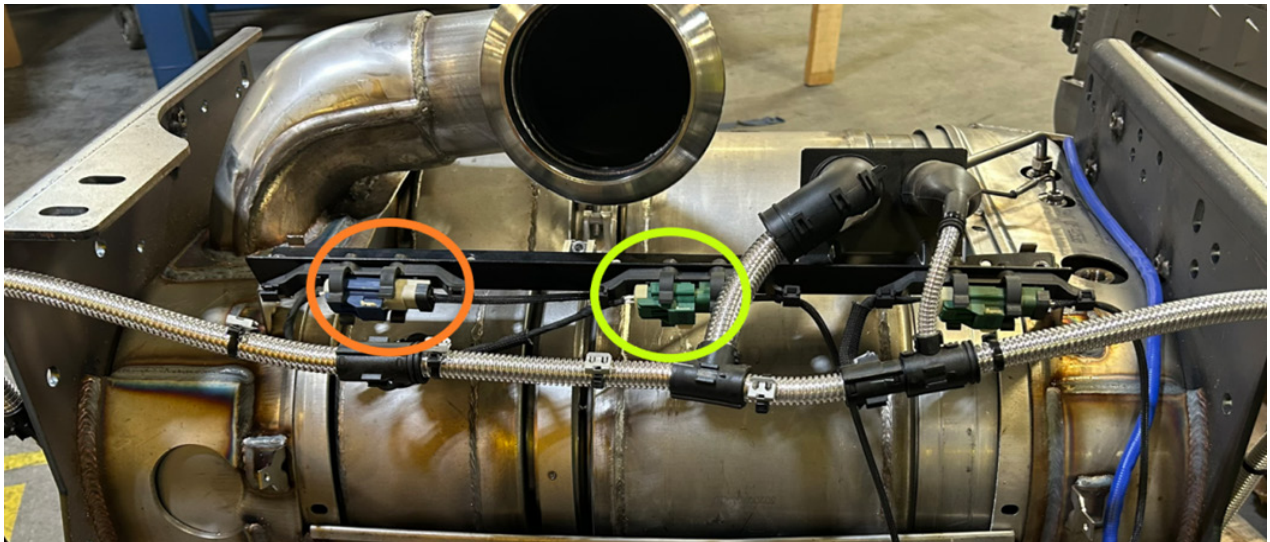
The SCR inlet temperature sensor wiring harness needs to be adjusted to reach the sensor port.

OEM OneBox with wiring harness



The green connector (circled in yellow) and the blue connector (circled in orange) will fit into a plastic connector like the above photo for an OEM OneBox. For the Dinex OneBox, the connector's position has changed, as you can see in the photo below.

Dinex OneBox with wiring harness



If you have any questions or concerns about this change, please contact technical support:

Mara Godding

Phone: (478) 353-9858

E-mail: MAG@dinexemission.com