

A One-Stop Emission Solution Provider:

All Technologies under 1 Roof

Dinex offers complete emission solution in-house and supplies OEMs all around the world. With all technologies under one roof and simulation tools and testing facilities in Europe, we are able to focus 100% on cooperating with our customers to provide them with agile solutions, moving from technology to solution at impressive speed.

going the extra mile



May 2023

All Technologies under 1 Roof

Dinex is the only supplier in the Heavy-Duty industry that holds competences for both development and production of all components of a complete emission solution in-house (Turbo to Tailpipe). Everything from design & simulations, up- and downstream piping, thermal insulation and decoupling elements, to ceramic HP-SiC & metallic substrates, catalytic coatings, and canning, is all based on Dinex' own innovative technologies. And that includes also the competences required to put all the "bricks" together, to design, simulate, and finally test and validate the solution.

"Dinex believes that a deep, holistic technology insight and quick response are two keys to succeed in diverse local markets all over the world, such as the Chinese. Our organization has spent a lot of effort in past years to localize technologies and processes to China, supported by global Dinex competences. We will keep offering customers value-added solutions thanks to quick decision making and complete in-house ownership of all core technologies."



Jerry Song
Head of Commercial and Engineering
Dinex China

In-house Testing Facilities in Europe, with Global Mindset

Dinex has in-house testing facilities where we are fully equipped to test samples and provide feedback on performance, and in addition we have close collaboration with local partners globally. Our centralized testing facilities are in Europe and serve customers from all regions of the world daily. By maintaining our core technical competences within the same location,

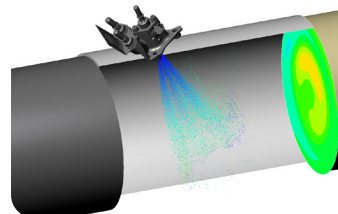
we guarantee our customers the same high level of service, supported by decades of first-hand experience from similar markets and applications. As secondary solution, our local partners can support with urgent local tasks where it is deemed unfeasible to test in Europe, with online support from our global competences to give our customers the same benefits.

We have a proven track-record for supporting our local development teams with global competences. In recent years we started cooperation with Ashok Leyland, to establish Dinex India from nothing to a PPAP-approved BS-VI solution, new local production site, and an on-boarded local organization in just 1 year.

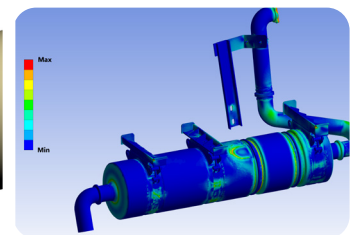
Whilst building the factory in India, the test centers in Europe were supporting Dinex project management and Ashok Leyland in testing their H4 truck platform, ensuring that all tests were completed and the BS-VI solution was ready to be set in production by the scheduled SOP in 2021, thus proving Dinex's testing capabilities to serve customers globally.

Simulations is the Fast-Track

Dinex uses simulation as a valuable tool for the design of aftertreatment system canning components and catalytic performance. Our simulations are built on a broad package that covers Computational Flow Dynamics (CFD) simulations to evaluate flow uniformity and pressure drop, to transmission loss, harmonics, and other levels of chemical as well as mechanical design like Finite Element Analysis (FEA).



CFD - Computational Fluid Dynamics.



FEA - Finite Element Analysis.

At our headquarter offices in Denmark an entire team of skilled professionals has over 20 years of experience in applying the full simulation toolbox to create better solutions for our customers, in a faster, more agile and efficient development process with less backflows.

Our simulation software has a comprehensive library of generic reactions for all existing catalyst technologies within Dinex, allowing for fine tuning into accurate reaction models that help the product development and application teams to deliver solutions to our customers problems, even before practical experiments take place, limiting the number of samples for testing whilst keeping the performance of samples which make it through to testing significantly higher than the alternative.

Dinex and KOHLER's mutual journey to Stage V

In 2017 Dinex and KOHLER commenced on a journey to meet the Stage V legislation limits. The result of this collaboration was a modular, scalable, and serviceable system, able to adapt to different vehicle layouts and configurations, a flexibility requirement of the utmost importance in off road applications.

With a development cycle of 3 years, the concept development included CFD simulations to assess design, flow, pressure drop and thermal management aspects. Extensive testing was conducted at Dinex' laboratories ranging from SGB to engine bench testing to evaluate emission performance and endurance of the DOC-DPF concepts. Thorough FEA testing was also conducted to ensure all mechanical durability aspects surrounding the very different designs and components involved were accounted for.

In Dinex, finding solutions for customers is always the priority. Thanks to remarkable teamwork and commitment to high quality engineering with closely involved teams around the world, Dinex provides an effortless service that is both agile and global.

To learn more about Dinex emission control solutions, you are most welcome to contact our CSO, Mr Lennart Rasmussen, our CTO, Mr Evangelos Georgiadis, and our Head of Commercial and Engineering in China, Mr Jerry Song.



Lennart Rasmussen
CSO, OEM
lra@dinex.dk



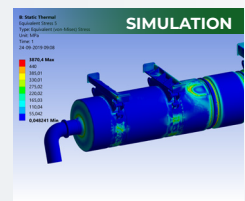
Evangelos Georgiadis
CTO, Dinex Group
evg@dinex.de



Jerry Song
Head of Commercial and Engineering, Dinex China
yso@dinex.cn

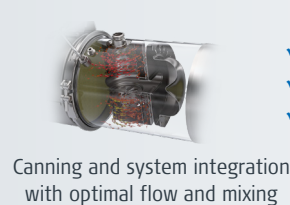
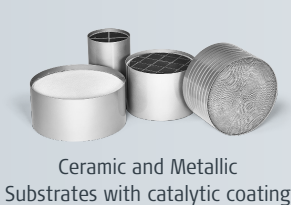
Global Footprint - Local Presence

Operating with local teams close to our customers, backed up by global technical competences.



Core Technologies - Proven Solutions

All developed and produced in-house for a simple, cost efficient supply chain with highest solution ownership.



- ✓ Euro VI
- ✓ Stage V
- ✓ Tier 4



Agile Partnership - Customized Innovations

Full System and customer specific engineering approach: From final application down to coating formula.

