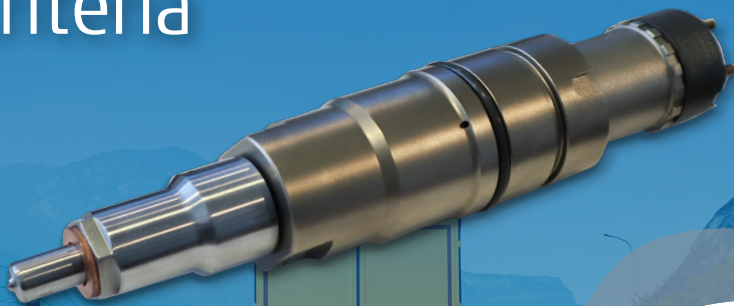


# Remanufactured Diesel Fuel Injector

## ✓ Core Criteria



going the extra mile

Your Partner in Exhaust and Emission



To ensure that your core deposit will be refunded the core must be fit for remanufacture. Therefore please pay attention to the following instructions that highlights the visual inspection you can carry out.

- ✓ The old part must match the part number of the delivered part.
- ✓ It must be complete, with no missing parts.
- ✓ The part must be intact and not dismantled.
- ✓ Only OEM or Dinex parts are accepted as cores.



Please use our original packaging with corresponding padding material when returning the part so as to avoid any damage during transport.

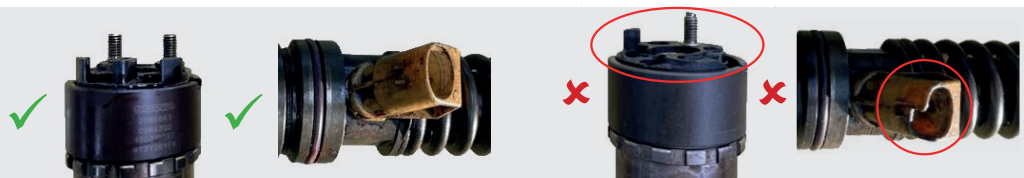
The housing may not be deformed, weathered, broken or corroded.



All of the connections and threads must be in perfect working order.



All of the electrical connections must be in perfect working order.



The nozzle may not be missing or broken, cracked or deformed.



The part must be complete.

